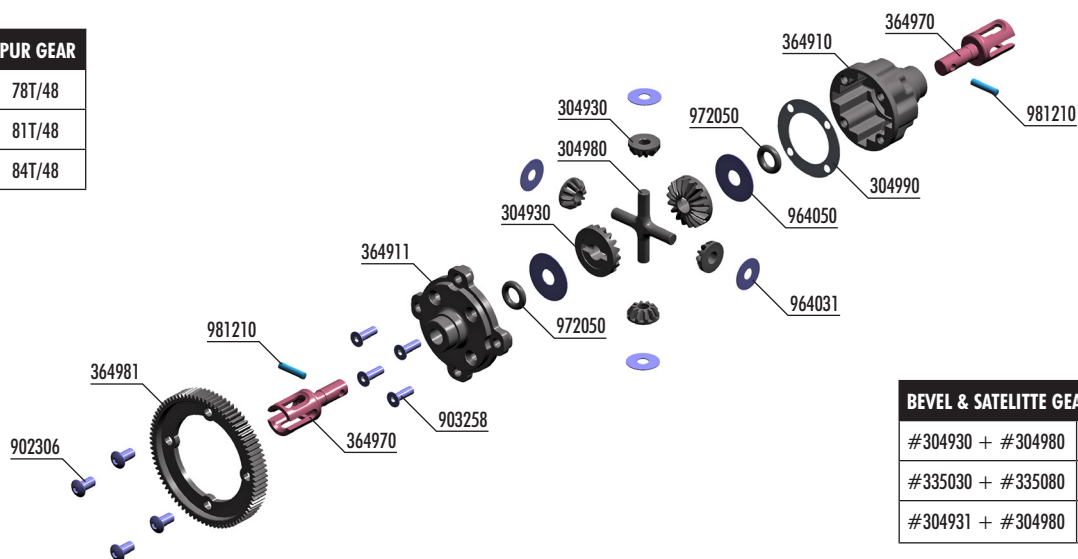
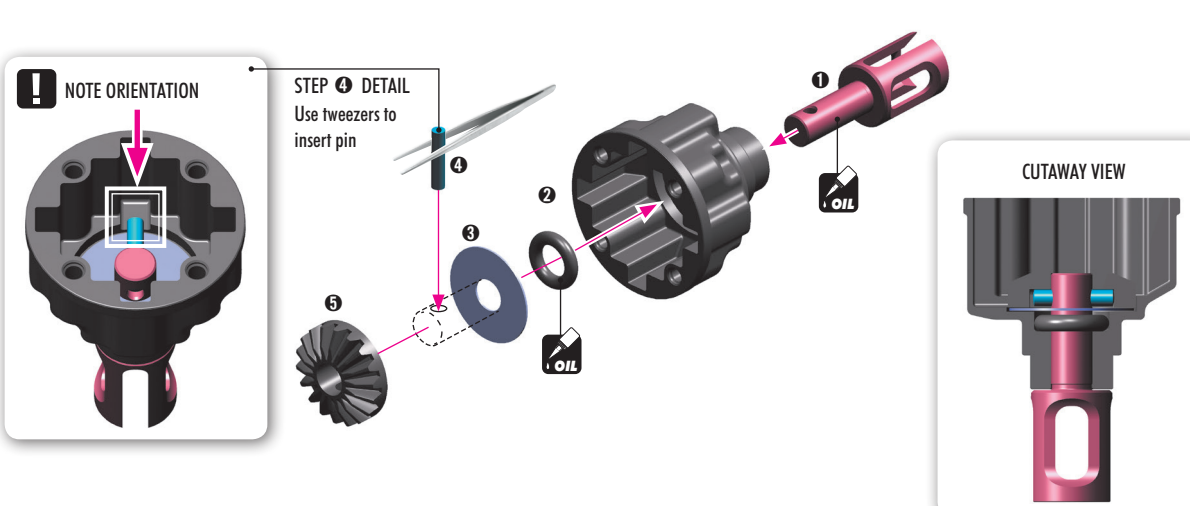


#364978	78T/48
#364981	81T/48
#364984	84T/48



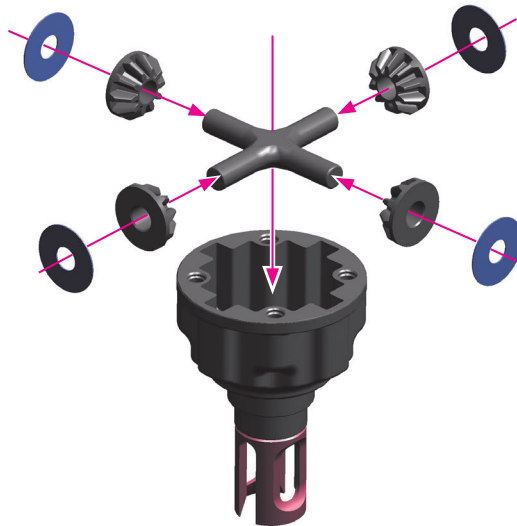
#304930 + #304980	COMPOSITE (STANDARD)
#335030 + #335080	STEEL (OPTION)
#304931 + #304980	GRAPHITE (OPTION)

90 3258 HEX SCREW SFH M2.5x8 (10)
96 4031 WASHER S 3.5x10x0.2 (10)
96 4050 WASHER S 5x15x0.3 (10)
97 2050 SILICONE O-RING 5x2 (10)
98 1210 PIN 2x10 (10)





964031
S 3.5x10x0.2



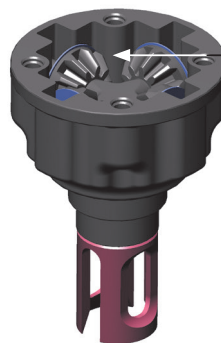
HUDDY SILICONE OIL

#106650	500 000cSt
#106692	1 000 000cSt

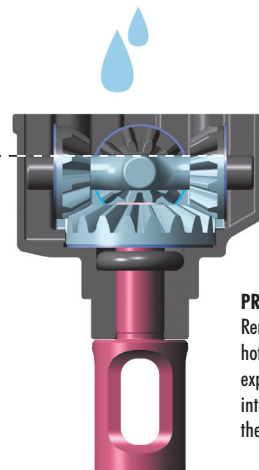


Center diff oil

Fill just above the satellite gears.
LOW TRACTION = 500 000 cSt
HIGH TRACTION = 1.000 000 cSt



Fill differential up to the top of the diff pin. DO NOT fill the diff to the top of the housing.



PROPER AMOUNT OF OIL IN THE DIFFS

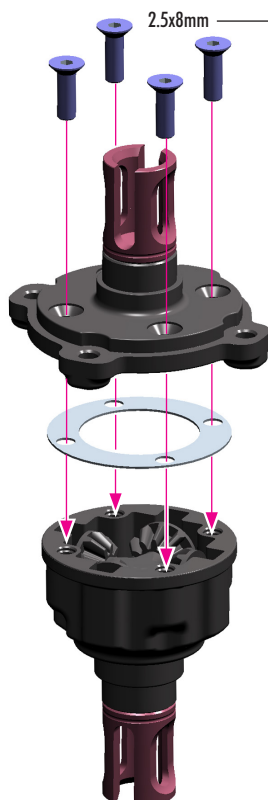
Remember that during operation the diff gets hotter and the heat may allow the oil to expand. If there is too much oil inside it may interfere with the diff operation and damage the internal gears.



902306
SH M3x6



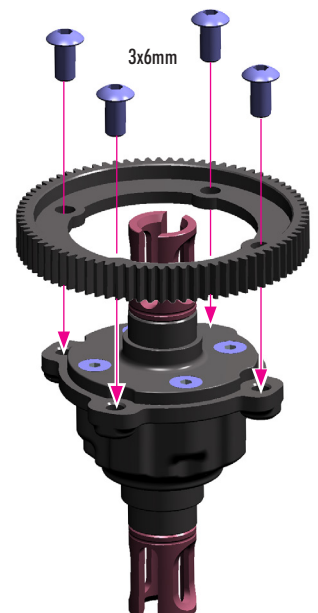
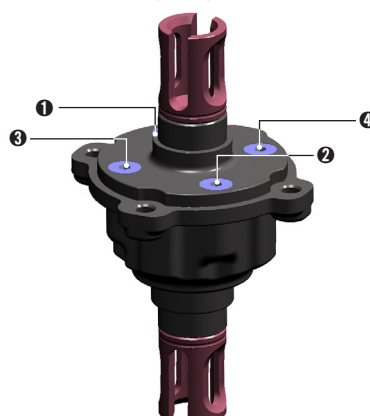
903258
SFH M2.5x8



2.5x8mm

Tighten the screws equally but do NOT tighten them completely.

Finish tightening in this order.



3x6mm