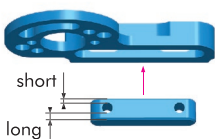


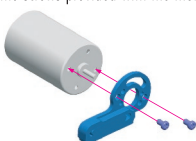


## Motor Holder Installation

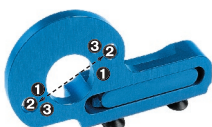
1. Assemble alu motor mount as shown.



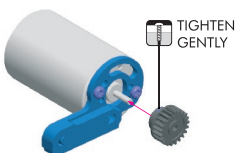
2. Attach the motor to the alu. motor holder with the screws provided with the motor.



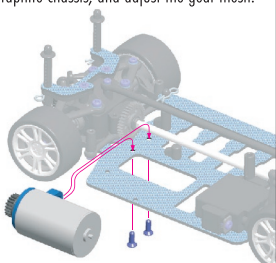
- ❶ Stock 180 motor
- ❷ Super Size 300/Micro Modified motor
- ❸ Orion Elite motor



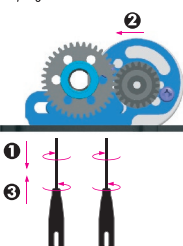
3. Push the pinion onto the motor output shaft, and gently tighten the setscrew.



4. Attach the motor mount to the M18 graphite chassis, and adjust the gear mesh.



5. Gently tighten the motor mount screws.



For further information & news please visit

**[www.teamxray.com](http://www.teamxray.com)**