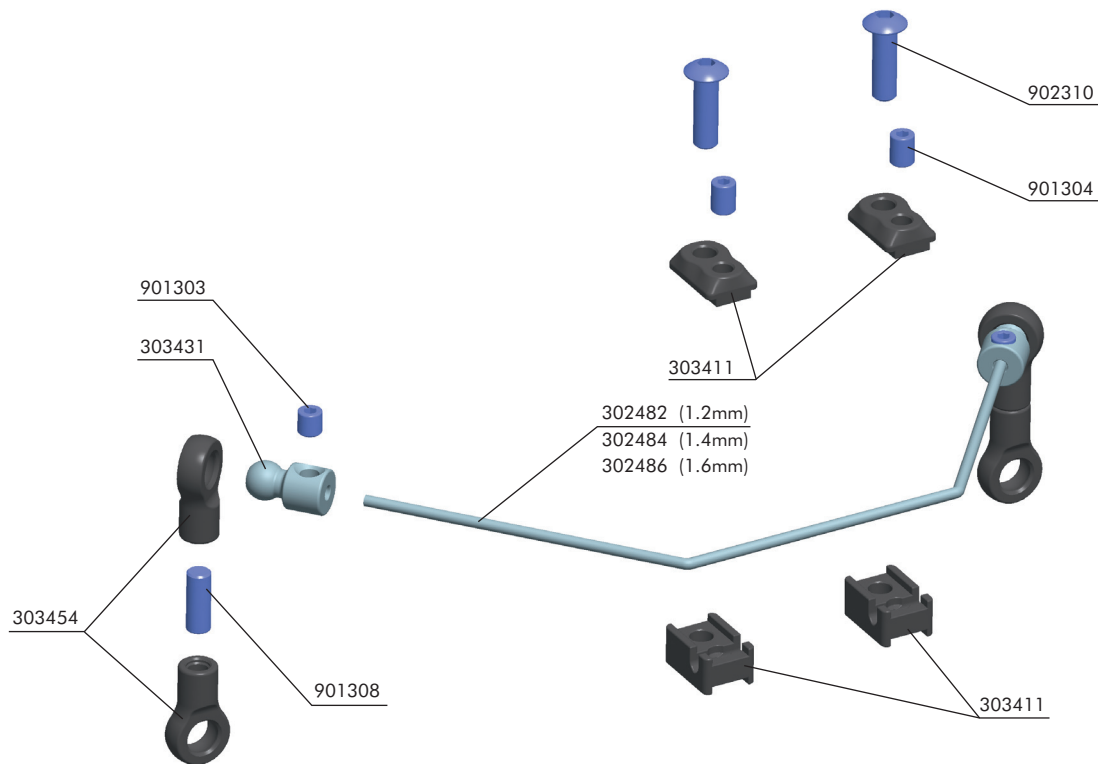




## #302401 T2 ANTI-ROLL BAR FRONT (SET)



#302482 T2 ANTI-ROLL BAR FRONT 1.2 MM  
 #302484 T2 ANTI-ROLL BAR FRONT 1.4 MM  
 #302486 T2 ANTI-ROLL BAR FRONT 1.6 MM  
 #303411 T2 COMPOSITE ANTI-ROLL BAR HOLDERS

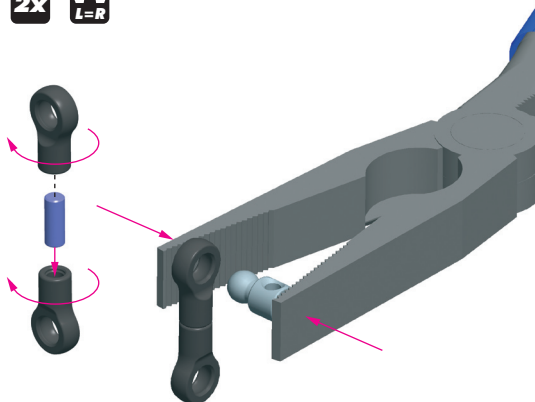
#303431 T2 ALU 5 MM BALL END (2)  
 #303454 T2 BALL JOINT 5 MM - OPEN (4)  
 #901303 HEX SCREW SB M3x3 (10)  
 #901304 HEX SCREW SB M3x4 (10)

#901308 HEX SCREW SB M3x8 (10)  
 #902310 HEX SCREW SH M3x10 (10)



901308  
SB M3x8

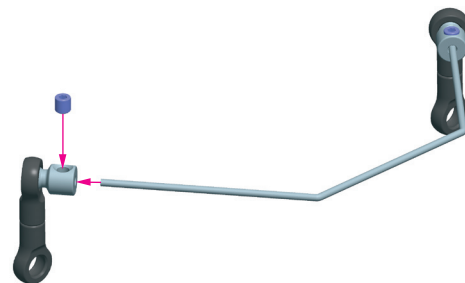
2x  
L=R



1.



901303  
SB M3x3



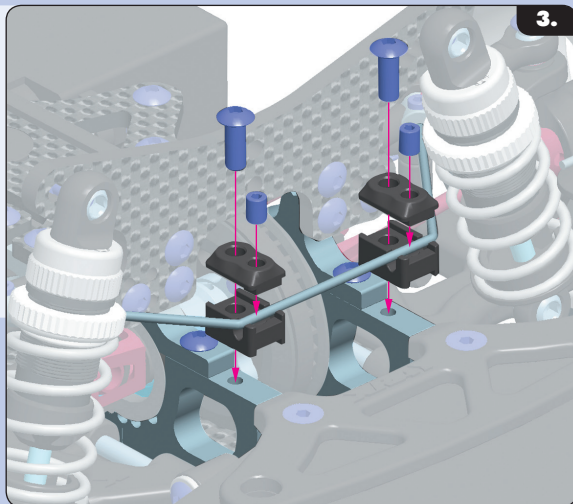
2.



902310  
SB M3x10

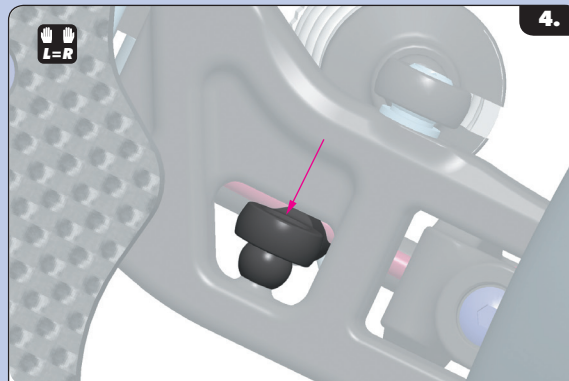


901304  
SB M3x4



3.

L=R



4.

Connect the ball joint to pivot ball moulded on the arm, both left and right. After installation check the car for tweak.