

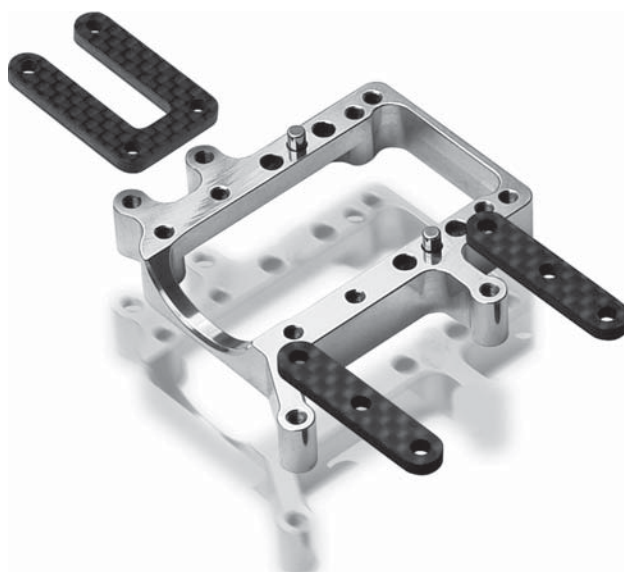
# MULTI-FLEX TECHNOLOGY™

## MULTI-FLEX TECHNOLOGY™

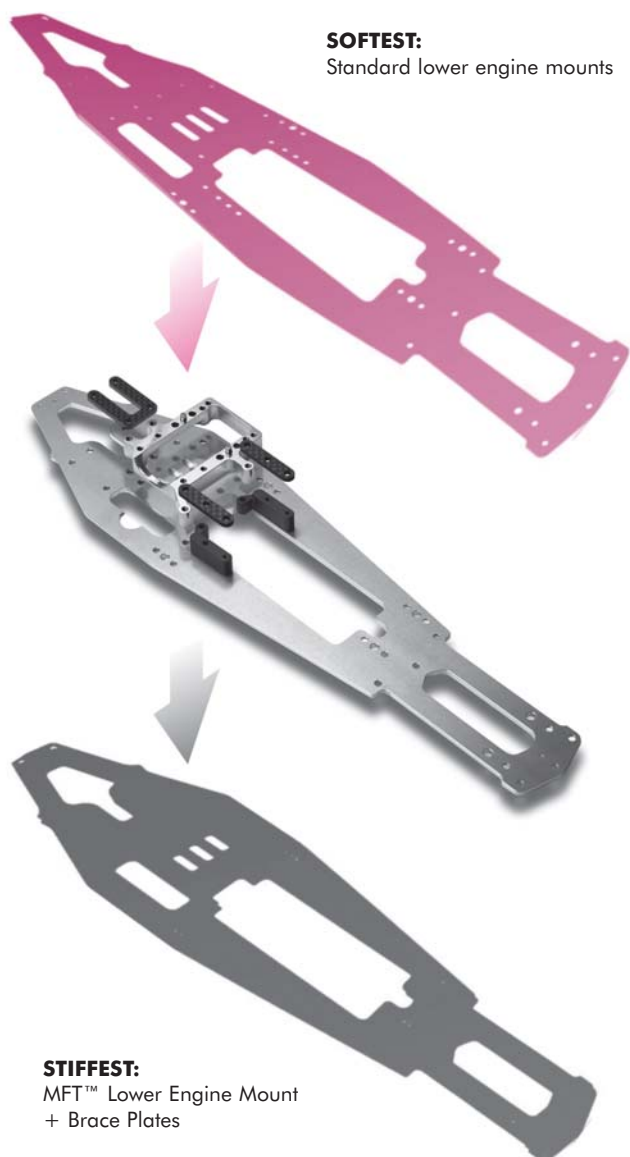
XRAY's innovative Multi-Flex Technology™ (MFT™) was originally designed for 1/10 electric touring cars, and has resulted in some of the most significant milestones in touring car development in the past few years.

The optional MFT™ 1-piece engine mounting system for the NT1 allows you to set up and adjust the NT1 chassis stiffness in the engine bay to suit various racing conditions or driving styles.

The standard 2-piece engine mount was designed and tested to allow the right amount of chassis flex to suit most driving styles and racing conditions. For specific racing conditions or driving styles, the middle of the chassis can be additionally reinforced by installing optional MFT™ 1-piece engine mount which features reinforcing legs both front and rear, reinforcing the chassis and stiffening the flex. The MFT 1-piece engine mount can be additionally mounted using graphite braces to the rear bulkheads and/or to the front holders next to the battery packs, creating a very solid and stiff platform.



## EFFECTS OF MFT™ ADJUSTMENT



## ADJUSTING CHASSIS STIFFNESS WITH MFT™ 1-PIECE ENGINE MOUNT

