

1. REAR DIFFERENTIAL

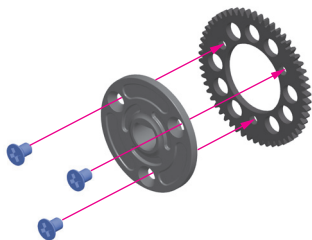
PAGE 8

STEP 4~5

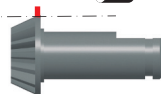
Use this Supplementary Instruction Sheet along with the standard M18T instruction manual included in the kit. This Supplementary Sheet highlights and explains new updated step and you should refer to them while building steel spur gear.

Use the steel spur gear when racing in dusty and/or outdoor conditions. Use the aluminum or steel pinion gear when using the steel spur gear. The aluminum or steel pinion gears are not included in the kit, and may be purchased separately.

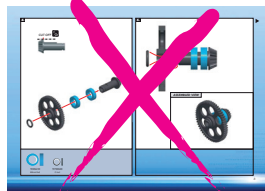
4.



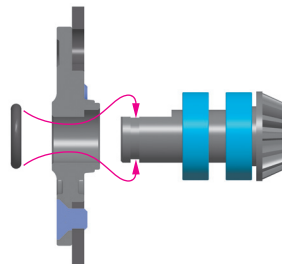
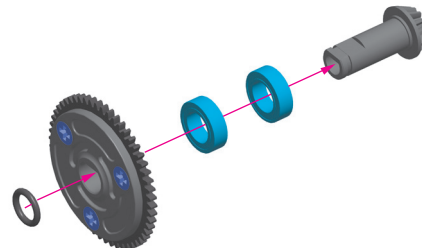
CUT OFF 



910253
M2.5x8



5.



930610
BB 6x10x3



970040
O 4x1

ASSEMBLED VIEW

