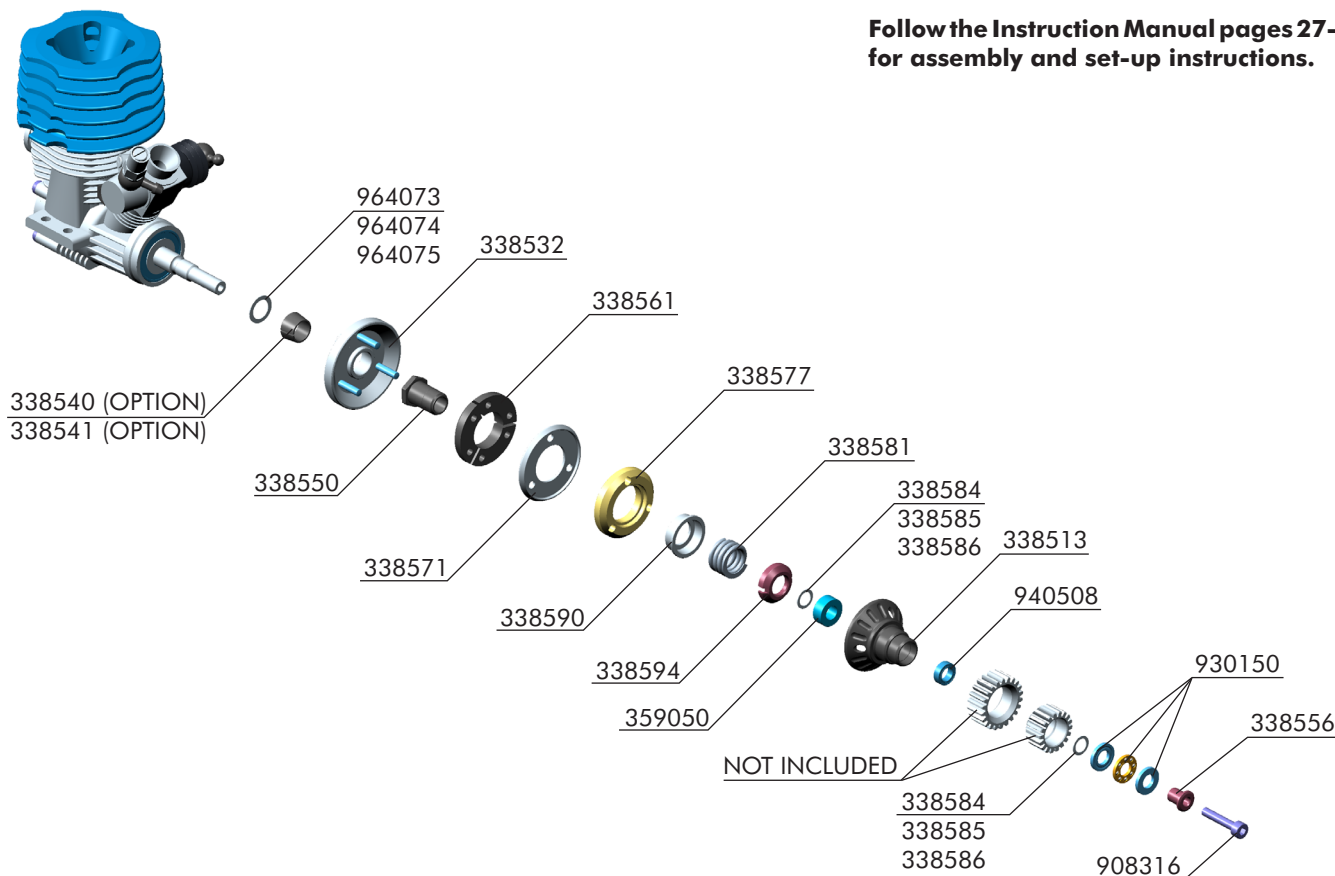


#338501 XCA (XRAY CENTRIFUGAL-AXIAL) CLUTCH SET - HIGH-DYNAMIC

This XRAY XCA High-Dynamic clutch set includes redesigned components which create a more dynamic clutch engagement suitable for most racing conditions. Included are a super-lightweight flywheel, new reinforced clutch flyweights, new smaller and super lightweight clutchbell, smaller clutch shoe, new medium-hardness clutch spring, and new alu clutch disc. All components were designed and long-term tested by the factory racing team. Provides optimum, high-dynamic clutch characteristics. Pinion gears are not included.

Due to the small size of the clutch, the rotating parts are lighter which provides smoother and faster acceleration as well as higher clutch efficiency.

Follow the Instruction Manual pages 27-28 for assembly and set-up instructions.



Parts included:

#338513 Clutchbell - High-Dynamic - HUDY Steel
 #338532 Flywheel - Alu 7075 T6 - Hardcoated - High-Dynamic
 #338550 Flywheel Nut - HUDY Spring Steel™
 #338556 Clutchbell Bushing - Hudy Spring Steel™
 #338561 Clutch Flyweight - High-Dynamic - Black (3)
 #338571 Alu Clutch Disc - High-Dynamic - Black (3)
 #338577 Clutch Shoe - High-Dynamic - Yellow (3)
 #338581 Clutch Spring - Medium
 #338584 Shim 5x7x0.2 (10)
 #338585 Shim 5x7x0.3 (10)

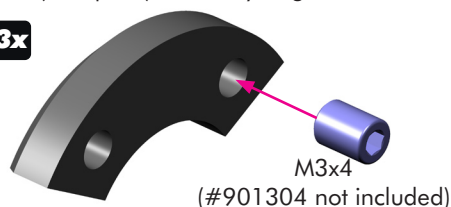
#338586 Shim 5x7x0.5 (10)
 #338590 Clutch Spring Cup - Alu 7075 T6
 #338594 Clutch Preload Adj. Nut - HUDY Spring Steel™
 #359050 Clutchbell Ball-Bearing MR105ZZ 5x10x4 (2)
 #908316 Hex Screw Socket Head Cap M3x16 (10)
 #930150 Carbide Ball-Bearing Axial F5-10 5x10x4 with Groove
 #940508 High-Speed Ball-Bearing 5x8x2.5 Rubber Sealed (2)
 #964073 Washer S 7x10x0.2 (10)
 #964074 Washer S 7x10x0.3 (10)
 #964075 Washer S 7x10x0.5 (10)

TECH TIP FOR EXTRA BOTTOM POWER

For extra bottom power, thread a M3x4 setscrew (#901304) into each clutch flyweight as shown. The setscrew will add more weight to the end of the flyweight which will cause the flyweight to open harder, giving more bottom power. This is recommended for high-traction tracks where bottom power is required.

IMPORTANT! Install setscrew into free (non-pivot) end of flyweight.

3x



CUTAWAY
VIEW

