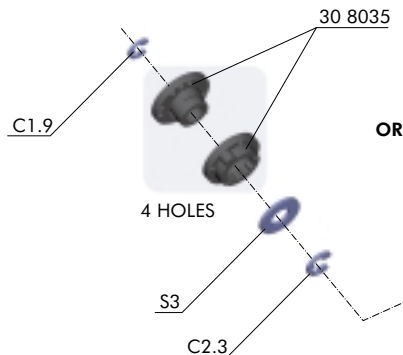
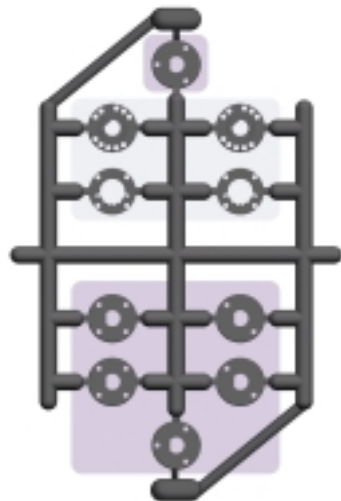


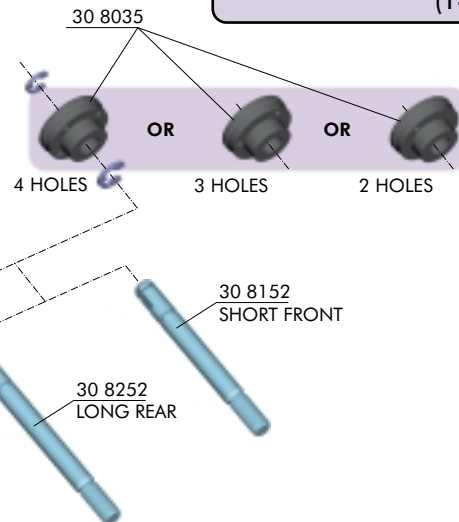
#30 8034 ADJUSTABLE AND NON-ADJUSTABLE SHOCK PISTON CONVERSION SET

ADJUSTABLE PISTONS (2-PIECE)



OR

NON-ADJUSTABLE PISTONS (1-PIECE)



BAG
#30 8034

30 8035 NYLON FRAME SHOCK PARTS 4-STEP, ADJ & NON-ADJ (2)
30 8152 HARDENED PISTON RODS FOR KEYED PISTONS FRONT (2)
30 8252 HARDENED PISTON RODS FOR KEYED PISTONS REAR (2)

Properly functioning shocks are one of the most important factors in the performance of your car. This XRAY shock piston set allows you to build four externally adjustable or non-adjustable shocks.

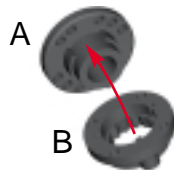
Both adjustable and non-adjustable pistons feature XRAY's unique keying system that locks them to the piston rods, preventing them from being stripped. Begin assembly by carefully removing all nylon piston parts from the frame, then very carefully trimming any excess flash with a sharp knife. We advise to use very fine sand paper to very smoothly and gently grind all small flashes. The side walls of the pistons must be perfectly round and smooth for proper operation.



ASSEMBLY INSTRUCTIONS

ADJUSTABLE PISTONS

The upper piston with holes (A) has a small notch. This small notch must exactly fit into the groove in the lower piston (B).



Press upper piston into lower piston as shown. Be sure to insert the upper piston into the lower piston so that the notch sits in the groove.



C 1.9

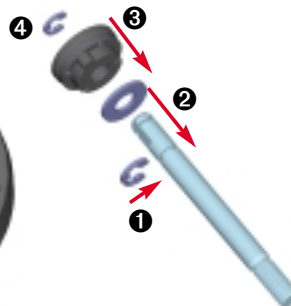
C 2.3

S 3

Assemble all four piston assemblies and shock rods as follows:

1. Press C-clip C2.3 into lower groove of shock rod.
2. Place washer S3 onto shock rod atop C-clip.
3. Press piston assembly onto shock rod, aligning flats in pistons with flats on shock rod.
4. Press C-clip C1.9 into upper groove of shock rod.

Cutaway view of the adjustable piston



assembled

NON-ADJUSTABLE

C 1.9

C 2.3

Assemble all four pistons and shock rods as follows:

1. Press C-clip C2.3 into lower groove of shock rod.
2. Press 1-piece piston onto shock rod, aligning flats in piston with flats on shock rod.
3. Press C-clip C1.9 into upper groove of shock rod.



assembled

IMPORTANT! When assembling the two front (or two rear) pistons/shock rods, make sure you use pistons with the same number of holes.