

SET-UP SHEET

XRAY 808E

RACE

Basic Set-up sheet

TRACK

NAME

CITY / COUNTRY

CONTACT

DATE

TEMPERATURE / °F or °C

AIR

TRACK

LAPS

FINAL POSITION

BEST LAPTIME/sec

RACE LENGTH/min.

TRACK SIZE

☐ OPEN

☒ MEDIUM

☐ TIGHT

TRACK TRACTION

☐ HIGH

☒ MEDIUM

☐ LOW

TRACK SURFACE

☐ SMOOTH

☒ MEDIUM

☐ BUMPY

TRACK TYPE

☒ HARD PACKED

☐ SOFT DIRT

☐ CLAY

☐ BLUE GROOVE

☐ ASTRO TURF

☐ GRASS

TRACK CONDITION

☒ DRY

☐ DUSTY

☐ WET

☐ MUD

DIFFERENTIALS		
TYPE		
FRONT	CENTER	REAR
STANDARD	STANDARD	STANDARD
DIFFERENTIAL - OIL		
20.000	10.000	10.000

GEARING			
PINION	17	SPUR GEAR	42
DIFF. PINION	10	CROWN GEAR	43

FRONT

#358182 C = 0.65

☐ WHITE

#358183 C = 0.70

☒ GREY

#358184 C = 0.75

☒ SILVER

#358185 C = 0.80

☒ GREY-BLUE

#358186 C = 0.86

☐ BLUE

#358187 C = 0.92

☐ VIOLET

#358188 C = 0.98

☐ PURPLE

OTHER

600

STANDARD

30%

1.2 mm

☐

1.3 mm

☐

1.4 mm

☐

1.5 mm

☐

1.2 mm

☐

1.3 mm

☐

1.4 mm

☐

1.5 mm

☐

1.1 mm

☒

OTHER

REAR

#358282 C = 0.47

☐ WHITE

#358283 C = 0.50

☐ GREY

#358284 C = 0.53

☒ SILVER

#358285 C = 0.57

☒ GREY-BLUE

#358286 C = 0.61

☐ BLUE

#358287 C = 0.65

☐ VIOLET

#358288 C = 0.70

☐ PURPLE

OTHER

500

STANDARD

50%

1.2 mm

☐

1.3 mm

☐

1.4 mm

☐

1.5 mm

☐

1.2 mm

☐

1.3 mm

☐

1.4 mm

☐

1.5 mm

☐

1.1 mm

☒

OTHER

FRONT

ANTI ROLL BAR

REAR

2.4

THICKNESS / mm

2.6

FRONT

TIRES

REAR

TYPE

INSERTS

WHEELS

ELECTRONICS

MOTOR

TIMING

ROTOR

ESC

BATTERIES

BRUSHLESS

PROGRAM

PUNCH

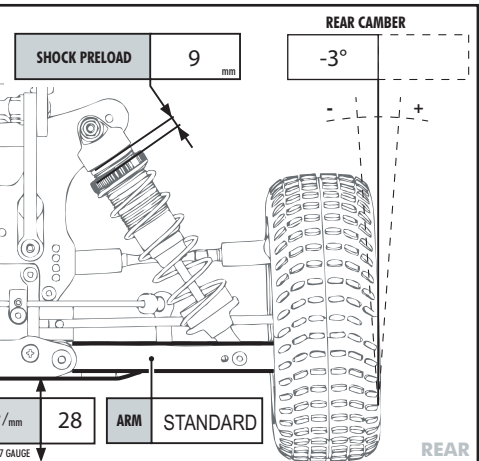
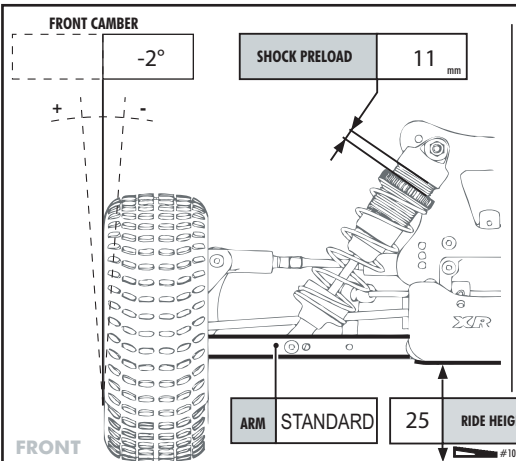
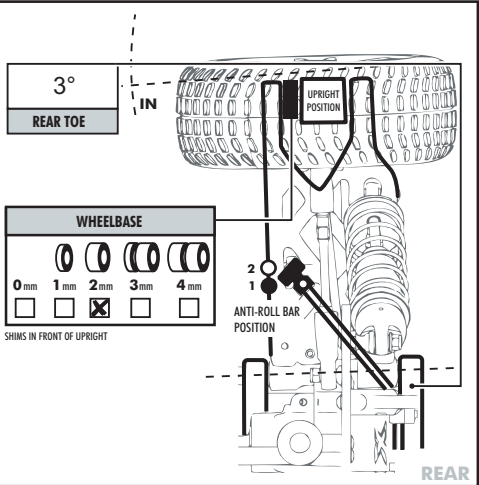
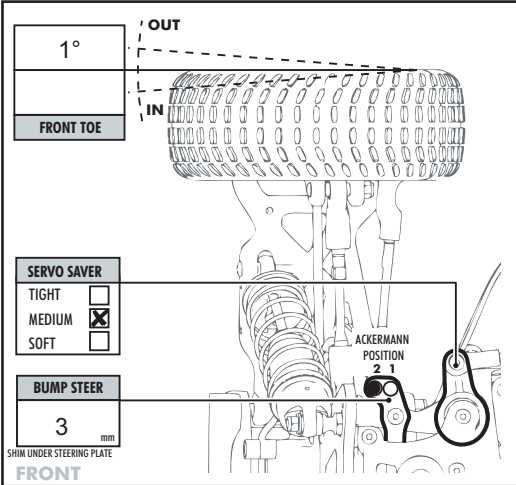
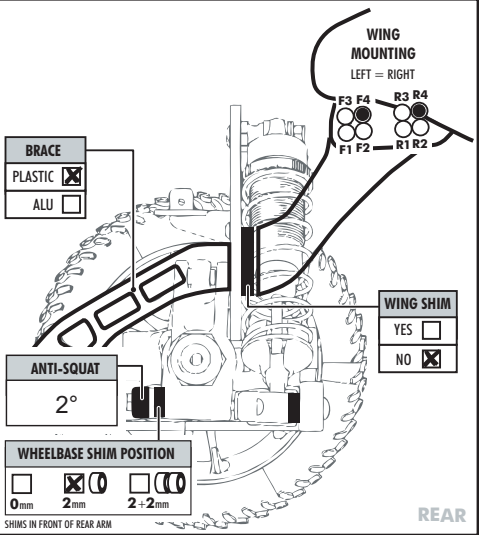
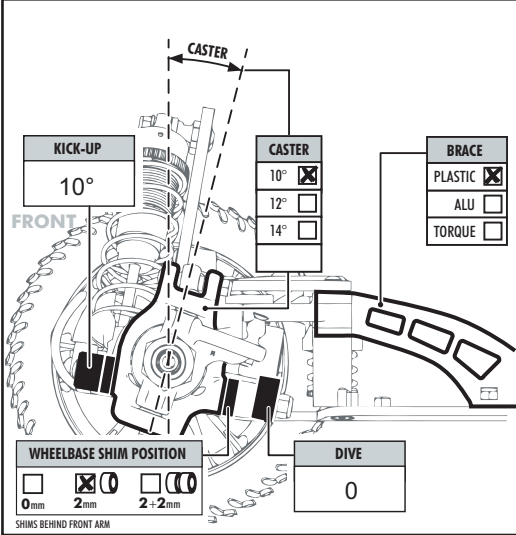
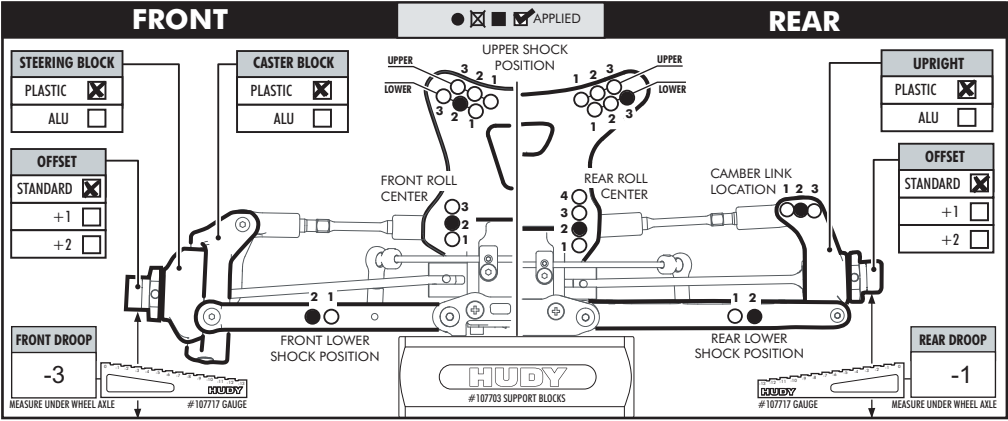
INITIAL BRAKE

AUTO BRAKE

BODY

TYPE

XRAY 808E



COMMENTS