

XRAY RX8

INSTRUCTION MANUAL SUPPLEMENTARY SHEET

Use this RX8 2012 Supplementary Instruction Sheet along with the standard RX8 Instruction Manual included in the kit.

New and Improved Parts

All of these parts are new or updated from the previous versions. Each part features its corresponding part number which can be used to for re-ordering. You can also refer to the complete exploded views.

RX8 2012 SPECS



#341101
CHASSIS 5MM - FLEX - CNC MACHINED - SWISS 7075 T6



#342111
COMPOSITE SUSPENSION ARM FOR GRAPHITE EXTENSION - FRONT LOWER



#342131
COMPOSITE SUSPENSION ARM FRONT UPPER - SHORT



#342190
GRAPHITE EXTENSIONS FOR SUSPENSION ARMS - FRONT LOWER (L+R)

#342213
COMPOSITE STEERING BLOCK FOR GRAPHITE EXTENSION - RIGHT



#342223
COMPOSITE STEERING BLOCK FOR GRAPHITE EXTENSION - LEFT



#342290
GRAPHITE EXTENSIONS FOR STEERING BLOCK (2)



#343111
COMPOSITE SUSPENSION ARM FOR GRAPHITE EXTENSION - REAR LOWER



#343190
GRAPHITE EXTENSIONS FOR SUSPENSION ARMS - REAR LOWER (2)



#346111
GRAPHITE RADIO PLATE - FLEX



#345510
2-SPEED SHAFT 8MM - SUPER LIGHTWEIGHT - HUDY SPRING STEEL - REINFORCED



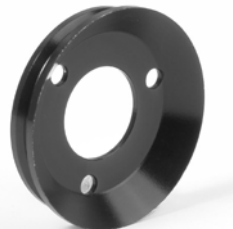
#348511
XCA UNIVERSAL CLUTCHBELL - HUDY STEEL - REINFORCED



#348532
FLYWHEEL - SWISS 7075 T6 - HARD COATED - FLAT



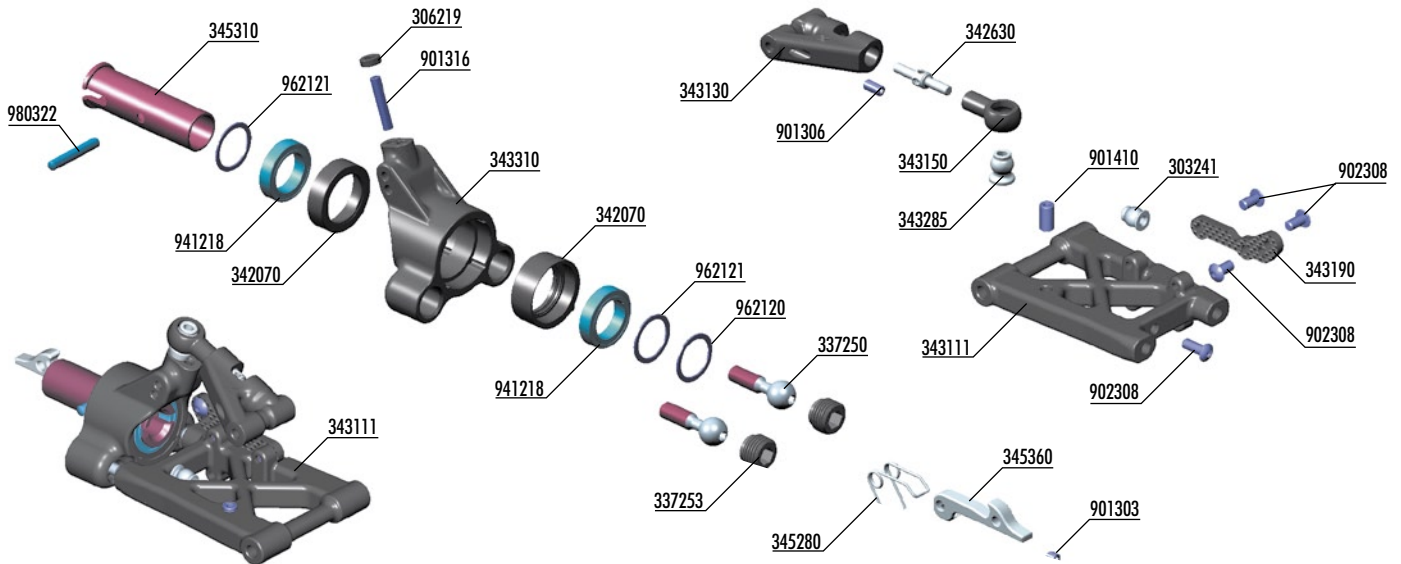
#348540
XRAY RX8 CONICAL CLUTCH WASHER SPRING SET



#348572
ALU CLUTCH DISK - SWISS 7075 T6 - CONICAL



#348575
CLUTCH SHOE - YELLOW



BAG

02.1

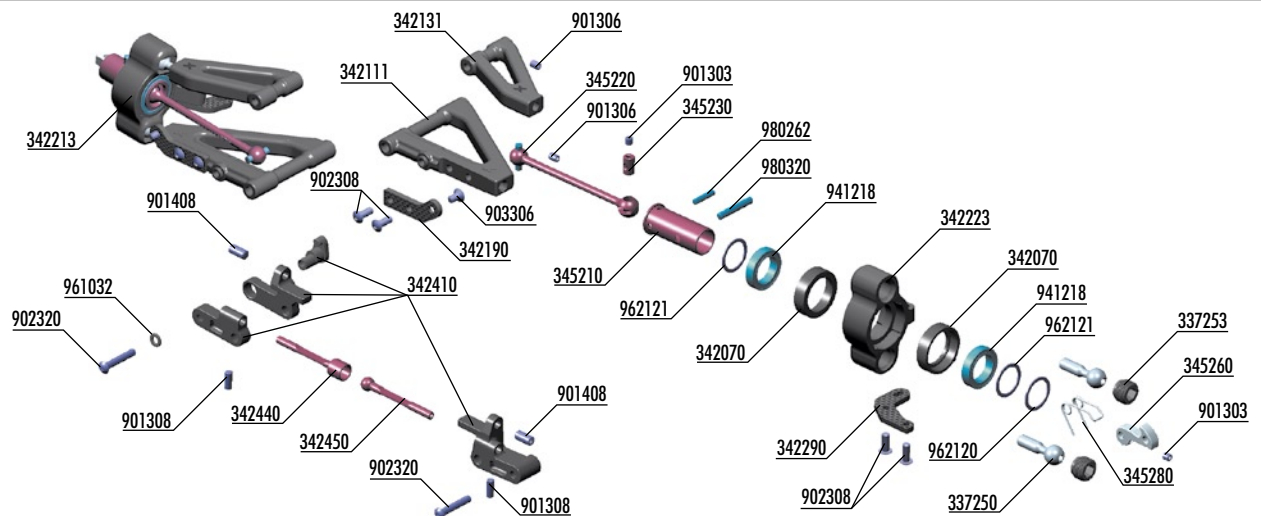
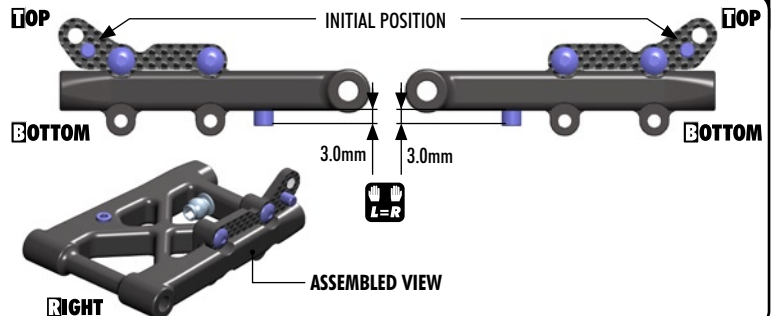
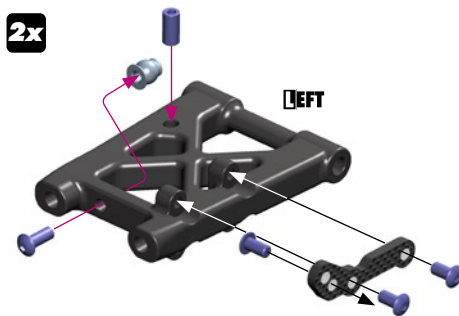
303241 BALL UNIVERSAL 5.8 MM HEX (4)
 306219 COMPOSITE SET OF SERVO SHIMS (4)
 337250 STEEL PIVOT BALL 8.4 MM (2)
 337253 COMPOSITE ADJUSTING NUT M10X1 (4)
 342070 COMPOSITE SET OF BUSHINGS (2)
 342630 ADJ. TURNBUCKLE L/R 20 MM - HUDY SPRING STEEL™ (2)
 343111 SUSP. ARM FOR GRAPHITE EXTENSION - REAR LOWER
 343130 COMPOSITE SUSPENSION ARM REAR UPPER
 343190 GRAPHITE EXTENSIONS FOR SUSP. ARMS - REAR LOWER (2)

343150 C. REAR UPPER CAMBER LINK BALL JOINT 5.8MM - SHORT & LONG (2+2)
 343285 PIVOT BALL 6.8MM (2)
 343310 COMPOSITE UPRIGHT REAR
 345280 WHEEL SPRING (2)
 345310 REAR WHEEL AXLE - HUDY SPRING STEEL™
 345360 ALU REAR WHEEL LOCK - SWISS 7075 T6 (2)
 941218 HIGH-SPEED BALL-BEARING 12X18X4 RUBBER SEALED (2)
 901303 HEX SCREW SB M3X3 (10)

901306 HEX SCREW SB M3X6 (10)
 901316 HEX SCREW SB M3X16 (10)
 901410 HEX SCREW SB M4X10 (10)
 902308 HEX SCREW SH M3X8 (10)
 962120 WASHER S 12X15X0.5 (10)
 962121 WASHER S 12X15X1.0 (10)
 980322 PIN 3X22 (10)



2x



BAG

04.1

337250 STEEL PIVOT BALL 8.4 MM (2)
 337253 COMPOSITE ADJUSTING NUT M10X1 (4)
 342070 COMPOSITE SET OF BUSHINGS (2)
 342111 SUSP. ARM FOR GRAPHITE EXTENSION - FRONT LOWER
 342131 COMPOSITE SUSPENSION ARM FRONT UPPER - SHORT
 342190 GR. EXTENSIONS FOR SUSP. ARMS - FRONT LOWER (L+R)
 342213 STEERING BLOCK FOR GRAPHITE EXTENSION - RIGHT
 342223 STEERING BLOCK FOR GRAPHITE EXTENSION - LEFT
 342290 GRAPHITE EXTENSIONS FOR STEERING BLOCK (2)
 342410 COMPOSITE FRONT ANTI-ROLL BAR HOLDERS
 342440 ANTI-ROLL BAR FRONT FEMALE - HUDY SPRING STEEL™

342450 ANTI-ROLL BAR FRONT MALE - HUDY SPRING STEEL™
 345210 FRONT WHEEL AXLE - HUDY SPRING STEEL™
 345220 FRONT CVD DRIVE SHAFT 71MM - HUDY SPRING STEEL™
 345230 DRIVE SHAFT COUPLING - HUDY SPRING STEEL™
 345260 ALU FRONT WHEEL LOCK - SWISS 7075 T6 (2)
 345280 WHEEL SPRING (2)
 941218 HIGH-SPEED BALL-BEARING 12X18X4 RUBBER SEALED (2)
 901303 HEX SCREW SB M3X3 (10)
 901306 HEX SCREW SB M3X6 (10)
 901308 HEX SCREW SB M3X8 (10)

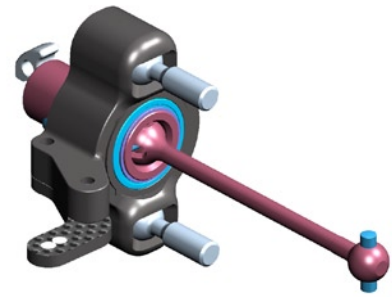
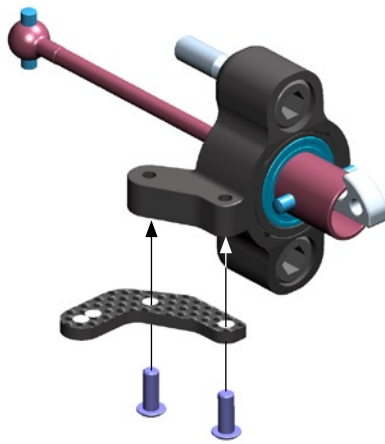
901408 HEX SCREW SB M4X8 (10)
 902308 HEX SCREW SH M3X8 (10)
 902320 HEX SCREW SH M3X20 (10)
 903306 HEX SCREW SFH M3X6 (10)
 961032 WASHER S 3.2 (10)
 962120 WASHER S 12X15X0.5 (10)
 962121 WASHER S 12X15X1.0 (10)
 980262 PIN 2.5X12 (10)
 980320 PIN 3X20 (10)

4. FRONT SUSPENSION

PAGE 16 / STEP 1



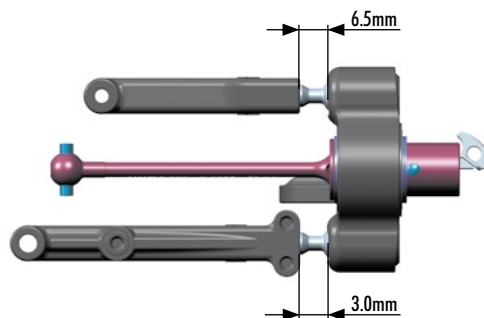
2x
L=R



ASSEMBLED VIEW

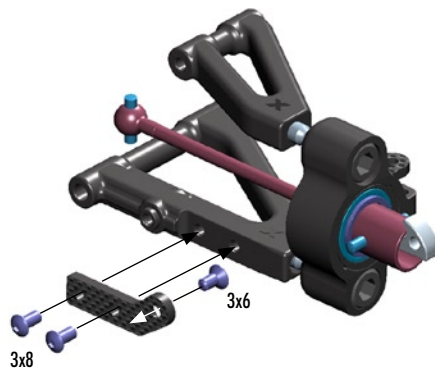
4. FRONT SUSPENSION

PAGE 16 / STEP 2



4. FRONT SUSPENSION

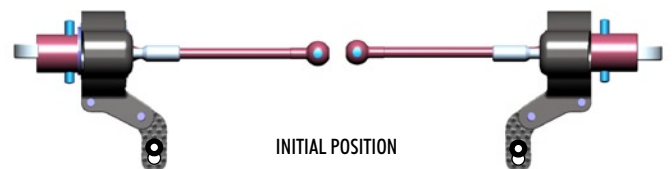
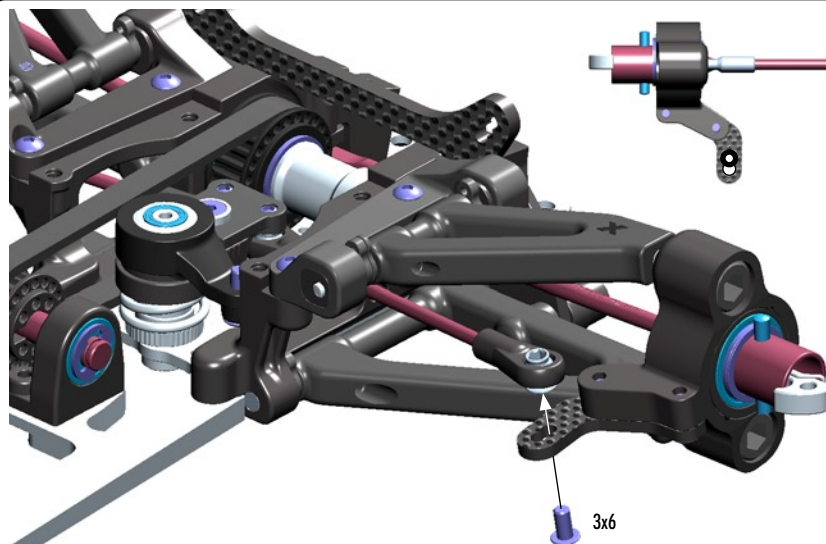
PAGE 16 / STEP 4



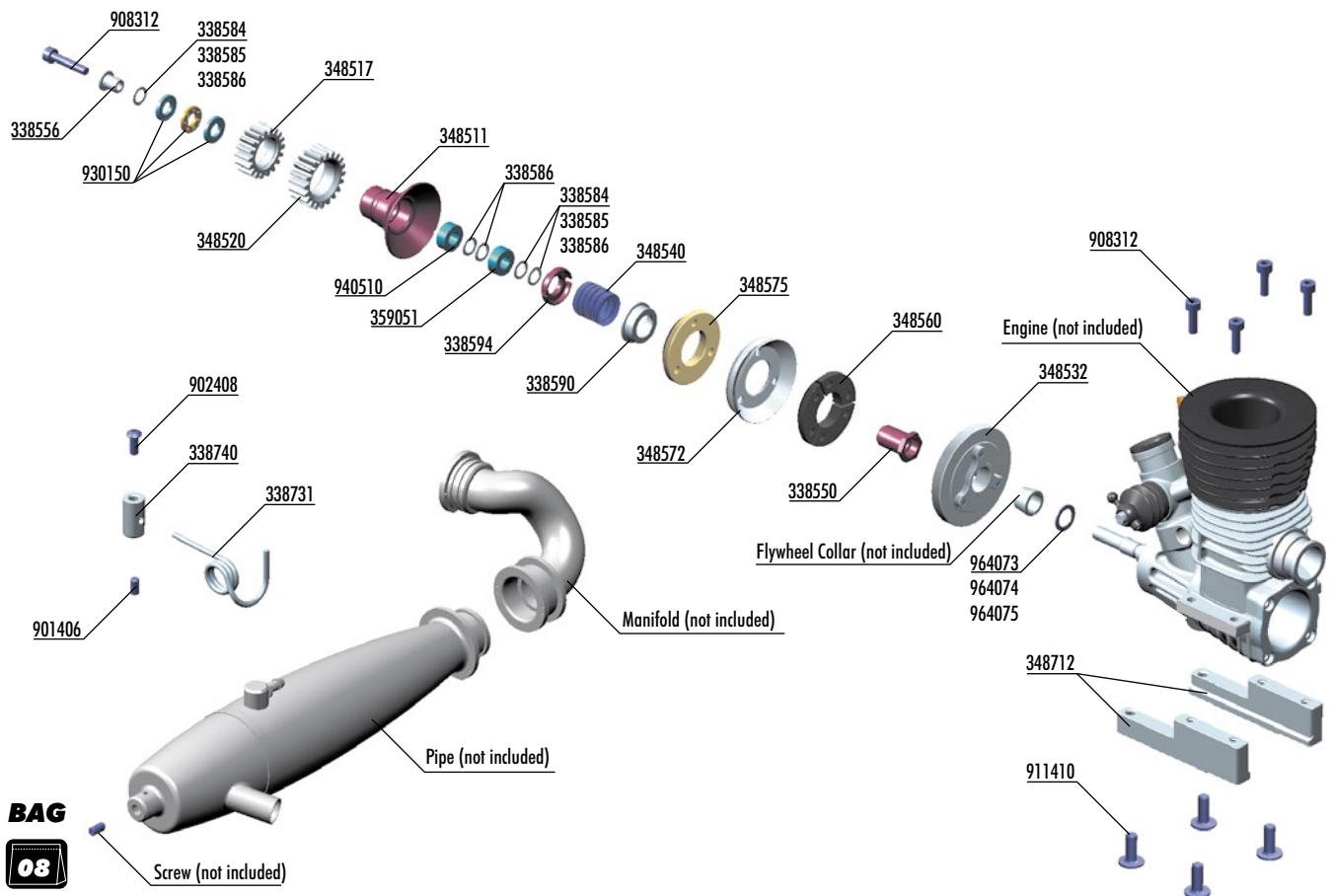
ASSEMBLED VIEW

6. STEERING

PAGE 22 / STEP 4



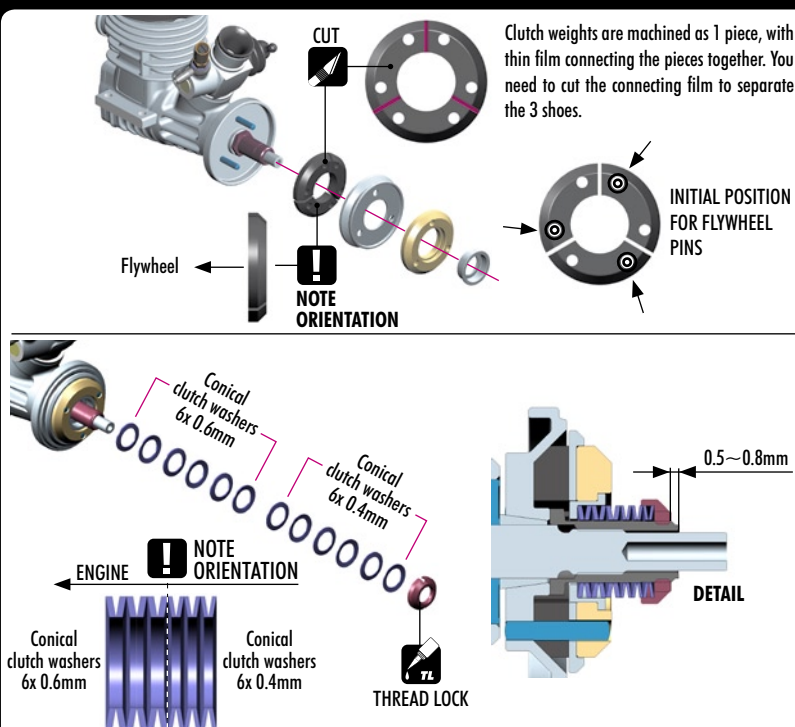
INITIAL POSITION



338550	FLYWHEEL NUT - HUDY SPRING STEEL™	348517	XCA ALU 7075 T6 HARD COATED PINION GEAR - 17T (1ST)	901406	HEX SCREW SB M4X6 (10)
338556	THRUSTBEARING COLLAR - HUDY SPRING STEEL™	348520	XCA ALU 7075 T6 HARD COATED PINION GEAR - 20T (2ND)	902408	HEX SCREW SH M4X8 (10)
338584	SHIM 5X7X0.2 (10)	348532	FLYWHEEL - SWISS 7075 T6 - HARD COATED - FLAT	911410	HEX SCREW FLANGED SH M4X10 (10)
338585	SHIM 5X7X0.3 (10)	348540	XRAY RX8 CONICAL CLUTCH WASHER SPRING SET	908312	HEX SCREW SOCKET HEAD CAP M3X12 (10)
338586	SHIM 5X7X0.5 (10)	348560	CLUTCH FLYWEIGHT SET	930150	CARBIDE AXIAL THRUSTBEARING F5-10 5X10X4
338590	CLUTCH SPRING CUP - ALU 7075 T6	348572	ALU CLUTCH DISK - SWISS 7075 T6 - CONICAL	940510	HIGH-SPEED BALL-BEARING 5X10X4 RUBBER SEALED (2)
338594	CLUTCH PRELOAD ADJ. NUT - HUDY SPRING STEEL™	348575	CLUTCH SHOE - YELLOW	964073	WASHER S 7X10X0.2 (10)
338731	EXHAUST MOUNTING WIRE - LONG	348712	ALU ENGINE MOUNTS (L + R)	964074	WASHER S 7X10X0.3 (10)
338740	EXHAUST WIRE MOUNT			964075	WASHER S 7X10X0.5 (10)
348501	XCA CLUTCH SET - CONVERSE				
348511	XCA CLUTCHBELL - HUDY STEEL - REINFORCED	359051	CLUTCH BELL BALL-BEARING 5X12X4 (2)		

8. ENGINE & CLUTCH

PAGE 27 / STEP 1



8. ENGINE & CLUTCH

PAGE 28 / STEP 1

