

#302001 ALU SUSPENSION ADJUSTABLE BULKHEADS

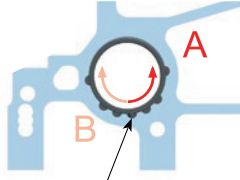
1. Press the #302070 large eccentric ball-bearing holders into the front bulkheads. Align the tab of each holder with the middle (bottom) notch in each bulkhead as shown. It may take some effort to press the large bearing holders into the bulkheads.
2. Press #309054 (BB 10x15) ball-bearings into the eccentric holders. Make sure the bearings turn freely and easily.

FRONT BULKHEADS

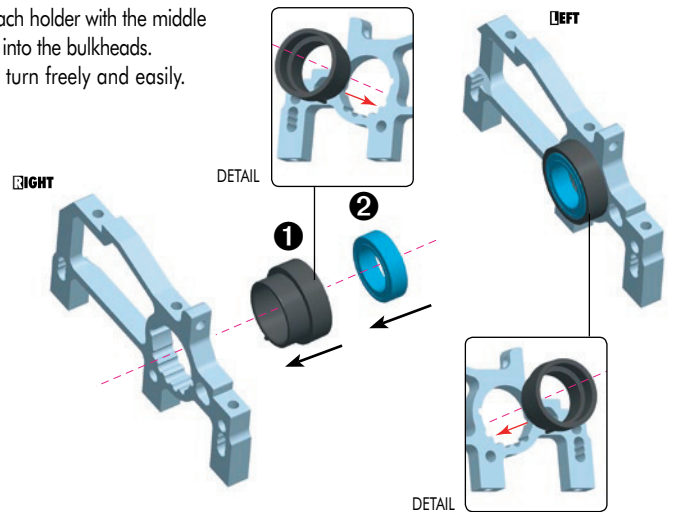
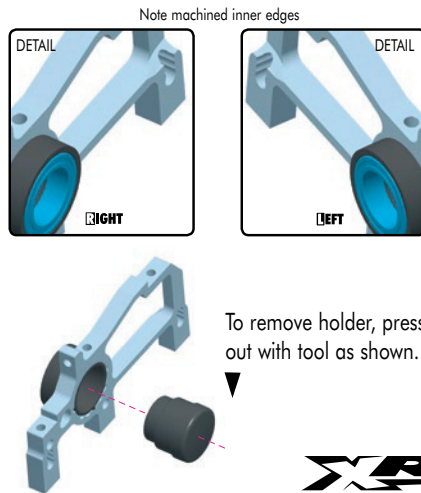
BELT TENSION ADJUSTMENT

To tighten front belt:
Rotate front nylon hubs in arrow direction (A)

To loosen front belt:
Rotate front nylon hubs in arrow direction (B)



INITIAL POSITION:
PLACE TAB
IN THIS NOTCH



XRAY ASSEMBLY INSTRUCTIONS

#302001 ALU SUSPENSION ADJUSTABLE BULKHEADS

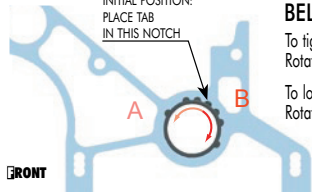
1. Press the plastic holders for the small ball-bearings into the rear bulkheads. The flange on each holder goes toward the INSIDE of the bulkhead. The holder with a hole through it goes into the RIGHT bulkhead. The holder without a hole through it goes into the LEFT bulkhead.
2. Press a #309045 (BB 6x10) ball-bearing into the open plastic holder (with hole) in the RIGHT bulkhead. Press a #309035 (BB 5x9) ball-bearing into the closed plastic holder (without hole) in the LEFT bulkhead.
3. Press the large eccentric ball-bearing holders into the bulkheads. Align the tab of each holder with the middle notch in each bulkhead as shown. It may take some effort to press the large holders into the bulkheads.
4. Press #309054 (BB 10x15) ball-bearings into the eccentric holders.

Make sure all bearings turn freely and easily.

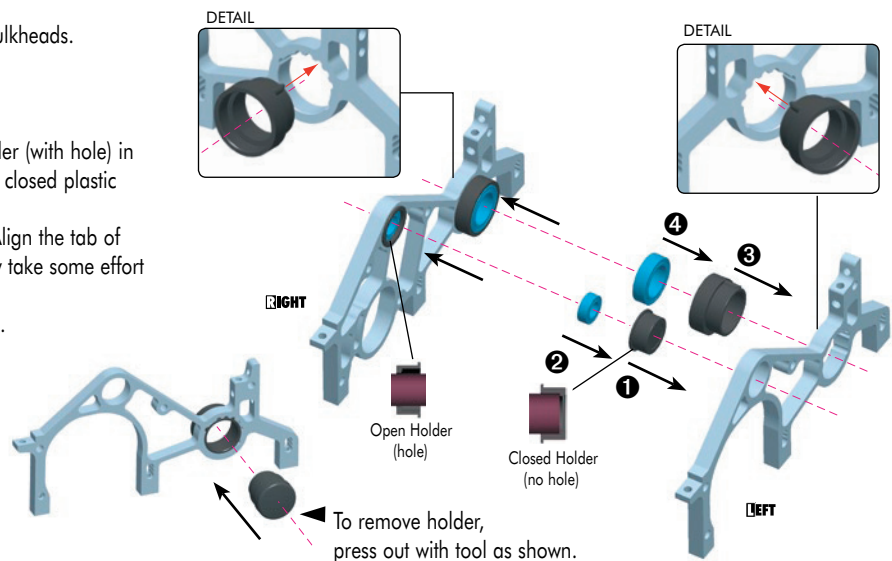
BELT TENSION ADJUSTMENT

To tighten rear belt:
Rotate rear nylon hubs in arrow direction (A)

To loosen rear belt:
Rotate rear nylon hubs in arrow direction (B)



INITIAL POSITION:
PLACE TAB
IN THIS NOTCH



XRAY ASSEMBLY INSTRUCTIONS