

XRAY XB8R

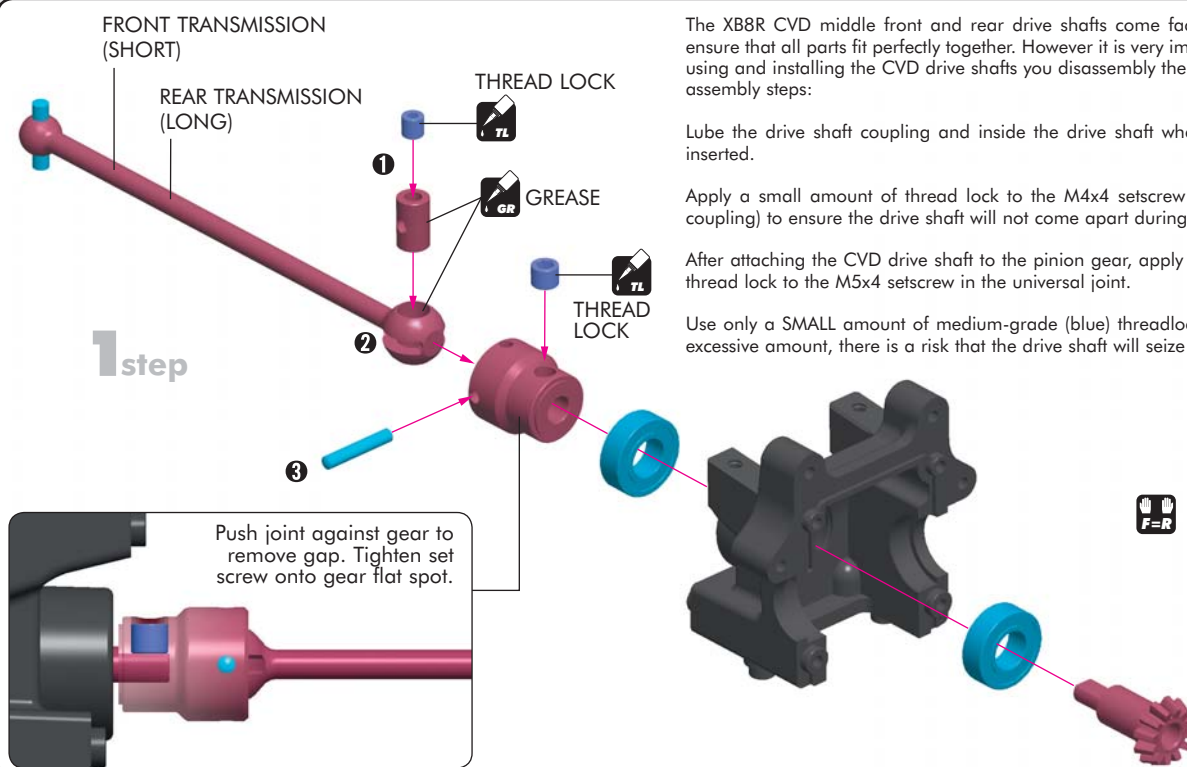
INSTRUCTION MANUAL SUPPLEMENTARY SHEET

2. FRONT & REAR TRANSMISSION

PAGE 10

PAGE 11

STEP 1



The XB8R CVD middle front and rear drive shafts come factory assembled to ensure that all parts fit perfectly together. However it is very important that before using and installing the CVD drive shafts you disassembly them and follow these assembly steps:

Lube the drive shaft coupling and inside the drive shaft where the coupling is inserted.

Apply a small amount of thread lock to the M4x4 setscrew (in the drive shaft coupling) to ensure the drive shaft will not come apart during racing.

After attaching the CVD drive shaft to the pinion gear, apply a small amount of thread lock to the M5x4 setscrew in the universal joint.

Use only a SMALL amount of medium-grade (blue) threadlock. If you apply an excessive amount, there is a risk that the drive shaft will seize up.

4. REAR & 6. FRONT SUSPENSION

PAGE 13

PAGE 16

STEP 1

The XB8R CVD universal drive shafts come factory assembled to ensure that all parts fit perfectly together. However it is very important that before using and installing the CVD drive shafts you disassembly them and follow these assembly steps:

Lube the drive shaft coupling and inside the drive shaft where the coupling is inserted.

Apply a small amount of thread lock to the M4x4 setscrew (in the drive shaft coupling) to ensure the drive shaft will not come apart during racing.

After installing the CVD drive shaft in the rear uprights and front steering blocks, apply a small amount of thread lock to the M5x4 setscrew in the drive axle.

After installation of the whole CVD drive shaft to rear uprights and front steering blocks apply small amount of thread lock to 5x4 hex screw that is mounted to the drive axle.

Use only a SMALL amount of medium-grade (blue) threadlock. If you apply an excessive amount, there is a risk that the drive shaft will seize up.

